



SPRINGFIELD  
CARE HOME

FAMILY RUN RESIDENTIAL CARE HOME



*Quality care for your loved ones*





## KIND WORDS FROM RELATIVES OF VALUED RESIDENTS

*"Totally and utterly recommend this care home . The staff are amazing, the place is kept immaculate, the food is lovely and varied. But I think what impressed me most was the activities provided on a daily basis. The residents were occupied, busy, engaged, entertained and happy."*

- Lindsay Galloway

# *Welcome*

**WELCOME TO SPRINGFIELD CARE HOME, A COSY  
FAMILY-OPERATED RESIDENCE PROVIDING BOTH SHORT  
AND LONG-TERM CARE FOR ELDERLY INDIVIDUALS.**

Nestled in the heart of the North East, our facility prides itself on offering comfortable, homelike surroundings where residents receive personalised attention and support.

We specialise in providing social care and dementia care tailored to meet the unique needs of our elderly residents.

Whether you're considering care for yourself or a beloved family member, we invite you to get in touch or drop by Springfield Care Home. A warm and welcoming atmosphere awaits you here, where we strive to make every resident feel at home.







## *Our care home*

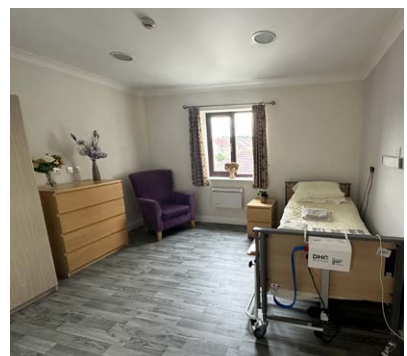
### ACCOMMODATION

Springfield Care Home, affiliated with the esteemed Hawksbury House and Holly House, boasts over three decades of providing exceptional care to residents. Our home is thoughtfully adorned to create a welcoming and cozy atmosphere for our elderly residents. Throughout, you'll find spacious, luminous lounges and dining areas, tastefully decorated to promote relaxation and comfort.

Each bedroom is meticulously furnished, complete with en-suite bathrooms and equipped with essential amenities, including emergency call systems, ensuring the highest standard of care for our residents.

We wholeheartedly encourage residents to personalize their space with personal belongings and even accommodate preferences for bringing furniture items.

Furthermore, our facilities cater to residents with hearing disabilities, ensuring inclusivity and accessibility for all.







## Services and care

SPRINGFIELD CARE HOME OFFERS A PRISTINE AND WELL-MAINTAINED ENVIRONMENT NESTLED IN HOUGHTON-LE-SPRING, PROVIDING A NURTURING COMMUNITY WHERE INDIVIDUALISED CARE IS PARAMOUNT.

Our commitment extends beyond our residents to our dedicated staff and meticulous premises. With round-the-clock residential social, dementia, and respite care, we ensure comprehensive support for every individual.

As a sister home to Hawksbury & Holly House, boasting over 30 years of experience, Springfield Care Home upholds a legacy of excellence and compassion.

Our greatest asset lies in our skilled and compassionate team, always prepared to go the extra mile for each resident's well-being.



RESITE CARE



RESIDENTIAL DEMENTIA CARE



RESIDENTIAL SOCIAL CARE





## *Facilities and services*

SPRINGFIELD CARE HOME IS MORE THAN JUST A RESIDENCE FOR THE ELDERLY; IT'S A GENUINE HOME WHERE COMPASSIONATE AND ATTENTIVE CARE IS PARAMOUNT. WE OFFER:

- A dedicated team of experienced staff providing round-the-clock care
  - A tranquil, inviting, and comfortable environment
  - Nourishing home-cooked meals with a diverse menu
- Continuous provision of tea, coffee, and snacks throughout the day
- Comprehensive residential care catering to various elderly disabilities
  - Robust community connections fostering a sense of belonging
  - Regular visits and services by clergy members
- Convenient access to visiting professionals such as hairdressers, chiropodists, opticians, dentists, and a library
  - Complete laundry services for residents' convenience
  - Engaging visits from local school children
- Regular outings to Luncheon clubs beyond the care home premises







## *Getting to know us*

### EXPERIENCED AND QUALIFIED TEAM

The team of carers at Springfield Care Home are totally committed to providing the very best standards of care to our residents. Springfield Care Home is managed by Shirley Delap, supported by an experienced Senior Care Team along with a team of Carers, Cooks and Cleaners who have worked at Holly House for many years.



SHIRLEY DELAP - MANAGER



KAREN WILSON - DEPUTY MANAGER



## Activities

### HOBBIES & INTERESTS

At Springfield Care Home, we prioritise the fulfillment and happiness of our residents by supporting their hobbies and personal interests.

We actively listen to the ideas and suggestions of our residents to organize a diverse range of activities tailored to entertain and stimulate. Most importantly, our activities are designed to be enjoyable and fun!

Our regular activities include visits from entertainers, engaging sessions with artists, delightful fish and chip suppers, and interactive cookery sessions, among many others. We ensure there's something for everyone to enjoy and look forward to.

### SOCIAL ACTIVITIES

At Springfield Care Home, there's something to delight everyone.

Throughout the week, our Care Home buzzes with a wide array of activities, and we organise enriching excursions to various destinations.

Our dedicated staff accompanies residents on outings to local shops, galleries, garden centers, and parks, ensuring they remain connected to the community. We also frequent nearby luncheon clubs and host delightful coffee afternoons.

Entertainment is a regular feature at our home, with visits from entertainers and artists, as well as weekly cookery sessions. Residents can also partake in uplifting church services and enjoy the company of visiting school children who often sing with them.

Each day brings a new opportunity for engagement, from invigorating exercise classes to nostalgic reminiscing sessions, from pampering beauty treatments to stimulating quizzes, and a host of other activities designed to brighten our residents' days.





## *Friends of Springfield House*

### THE FRIENDS OF SPRINGFIELD CARE HOME IS A DEDICATED GROUP OF INDIVIDUALS INTERESTED IN THE WELL-BEING OF OUR RESIDENTS

Comprising residents, relatives, friends, and staff, anyone keen to join the Friends of Springfield Care Home can simply attend our meetings. We extend a warm welcome to all new members.

Our monthly gatherings serve as forums for discussions on various topics concerning life at Springfield Care Home.

We encourage open dialogue, suggestions, and feedback to ensure we maintain transparency and continuously improve our care services. Every voice matters, and residents and their families are encouraged to share their thoughts, no matter how big or small the concern.

In addition to discussions, we collaborate on planning excursions and activities for the upcoming months. Our aim is to involve as many residents, friends, and family members as possible, tailoring our plans to meet the preferences and needs of our residents and their loved ones. Together, we shape the experiences and enrich the lives of those in our care.

### COME AND VISIT SPRINGFIELD HOME

All people who make enquiries are invited to visit our Care Home and meet our Residents and Staff. You can stay for lunch and try our delicious home-cooked food. At each meal, there are several choices available and we also cater for special diets.

If you would like to learn about Springfield Home, we would be delighted to show you our care home at your convenience. Please call **0191 512 0613** or email **info@springfieldcarehomes.co.uk** to arrange your visit.

We look forward to meeting you in the near future.



T. 0191 512 0613 | E. [info@springfieldcarehomes.co.uk](mailto:info@springfieldcarehomes.co.uk) | W. [www.springfieldcarehomes.co.uk](http://www.springfieldcarehomes.co.uk)

Springfield Care Home, Bunker Hill, Houghton-le-Spring, Tyne and Wear, Dh4 4TN